



FFG
Promoting Innovation.

Finding cooperation partners with the Enterprise Europe Network



Astrid Flandorfer

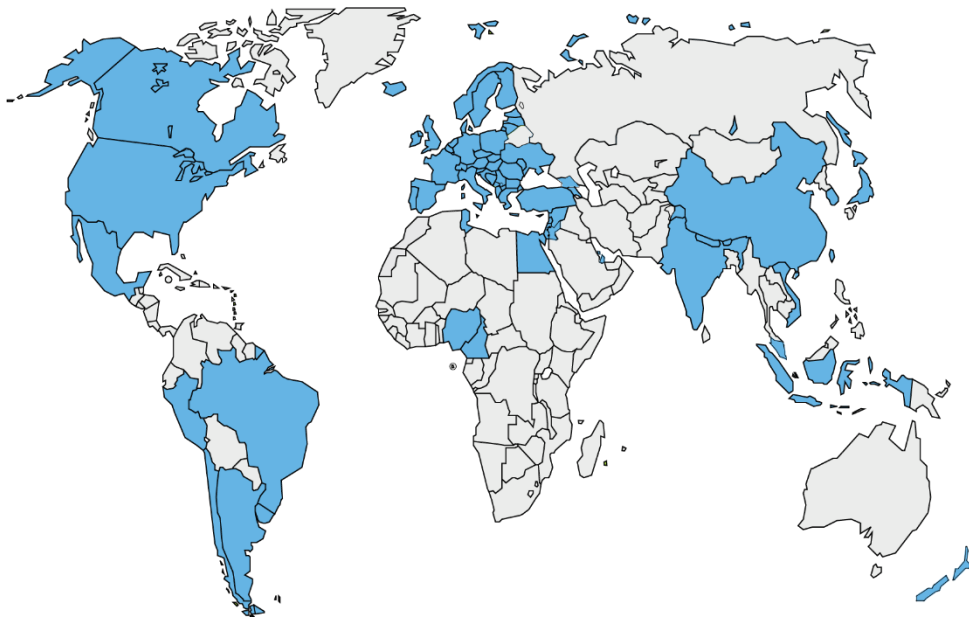
Enterprise Europe Network





The world's largest support
Network for innovative SMEs
with international ambitions

The Network in figures



Co-financed by

- **EU (Single Market Programme)**



3,000

Experts



600+

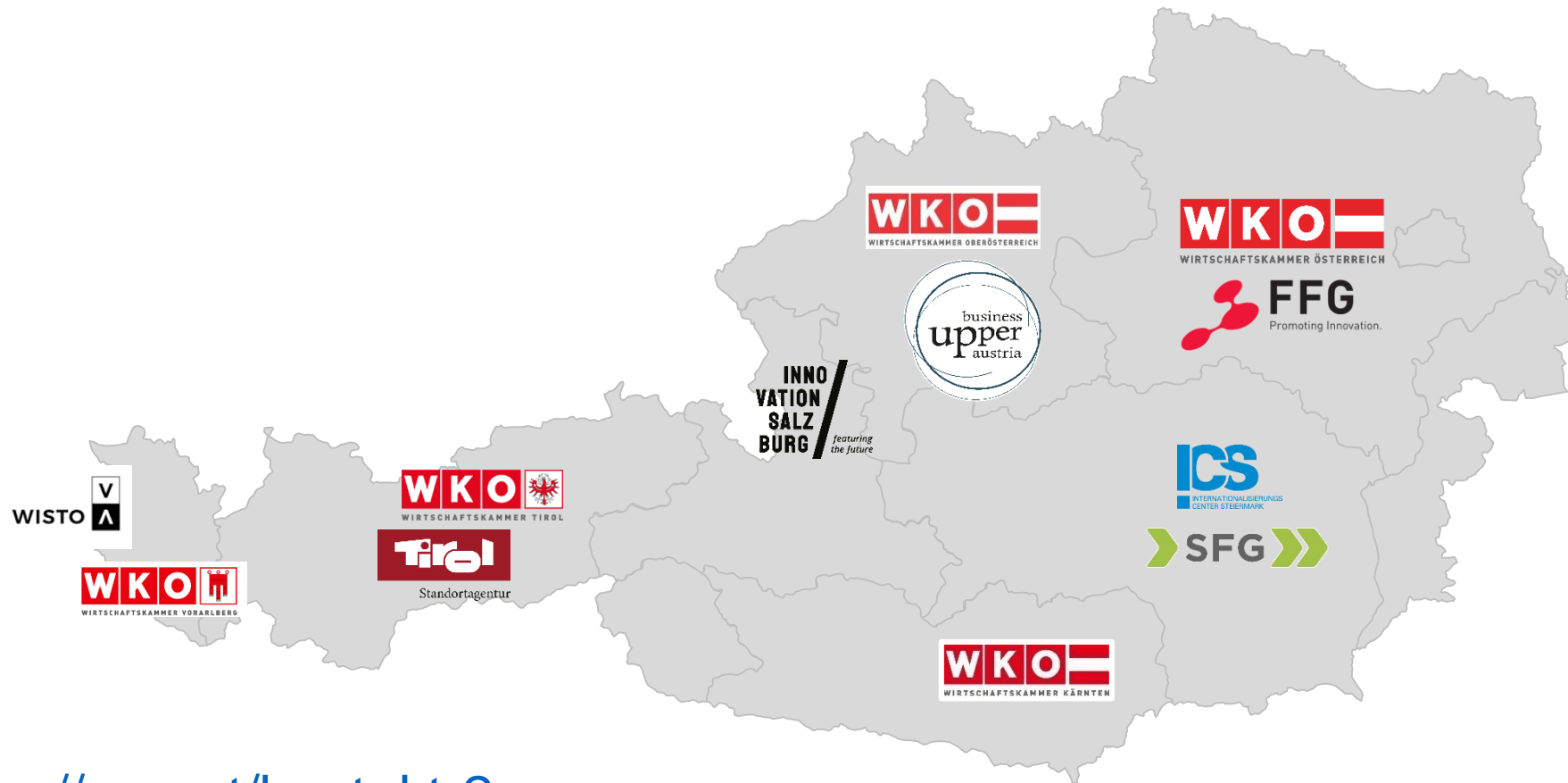
Regions



60+

Countries

EEN Local Contact Points in Austria



<https://een.at/kontakt-2>

EEN Local Contact Points in Singapore

— Singapore

Singapore Business Federation

The Singapore Business Federation (SBF) is the apex business chamber championing the interests of the Singapore business community in the areas of trade, investment and industrial relations. It represents more than 27,000 companies, as well as key local and foreign business chambers.

Address

160 Robinson Rd #06-01
68914
Singapore

Website

<http://www.sbf.org.sg>

Enterprise Singapore

Enterprise Singapore is the government agency championing enterprise development. We work with committed companies to build capabilities, innovate, and internationalise. We also support the growth of Singapore as a hub for global trading and startups.

Address

230 Victoria Street #09-00 Bugis
Junction Office Tower
188024
Singapore

Website

<http://www.enterprisesg.gov.sg>

IPI Singapore

IPI assists enterprises in matching enabling technology and capability to meet their innovation needs. IPI connects enterprises to innovation through its team of technology specialists with diverse backgrounds, online and physical technology marketplaces and network of global technology partners.

Address

10 Biopolis Road #02-01
Chromos
138670
Singapore

Website

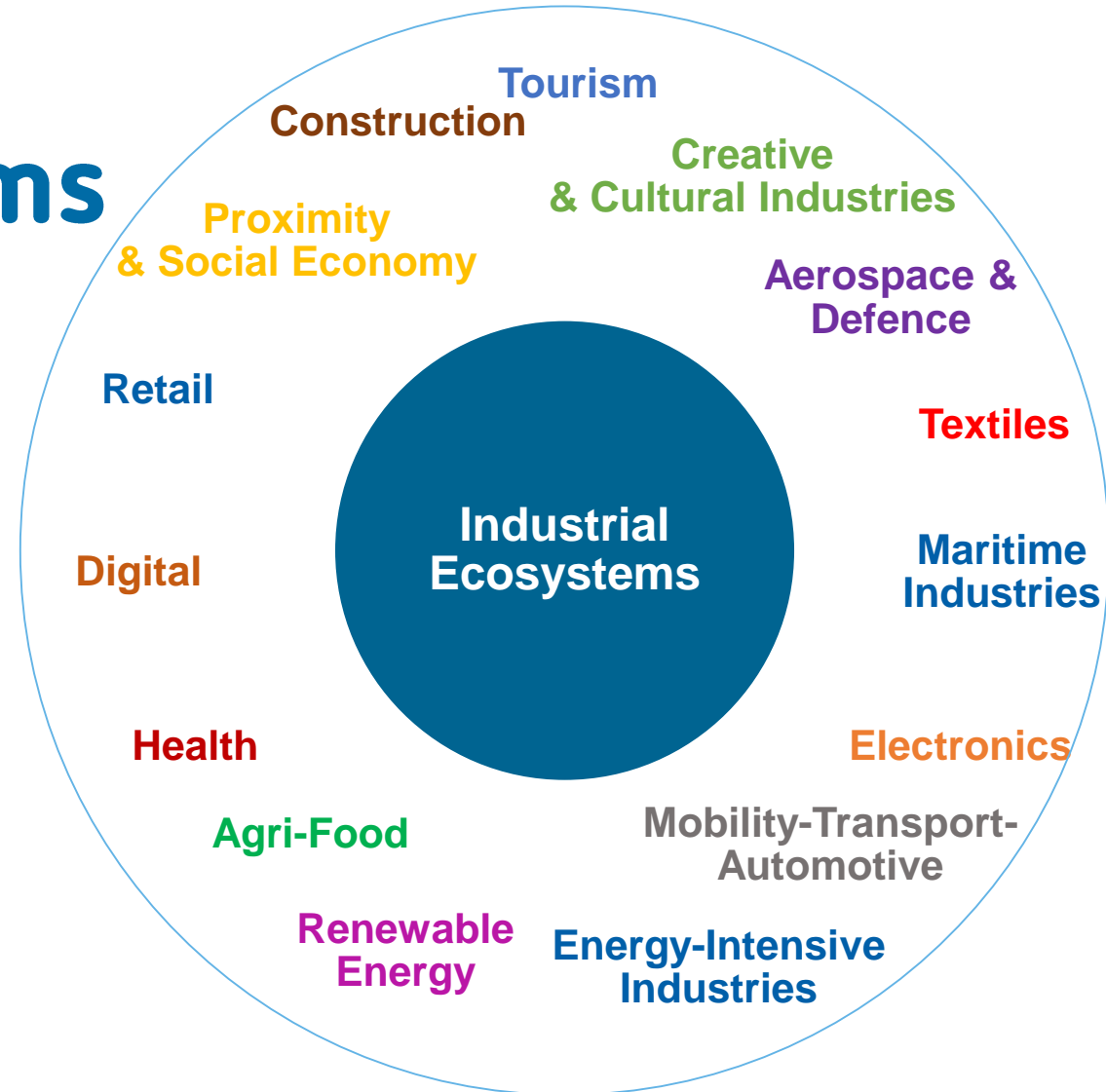
<http://www.ipi-singapore.org>

The Network approach

How we help SMEs



SMEs from all Industrial Ecosystems



6 steps to the right cooperation partner with the support of the Enterprise Europe Network

1. STEP

Finding your regional contact point

AT: <https://www.enterpriseeuropenetwork.at/kontakt-2>

ALL contact points: <https://een.ec.europa.eu/local-contact-points>



2. STEP

Profile

Develop your partner search profile together with your EEN advisor

Your EEN advisor will then publish it in EEN database



3. STEP

Expressions of interest

forwarded to you by your EEN advisor



4. STEP

Selection

You check the EOIs and select those potential cooperation partners you would like to get in contact with.

5. STEP

Establishing contact

Your EEN advisor will establish the contact(s)

6. STEP

Discussion of project content

After discussing with potential project partners you chose the one(s) you would like to cooperate with.



THE END

Joint proposal submission

Together with your new cooperation partner you develop the project proposal and submit it

Or the other way 'round:

1. Search

Search in EEN database

for technology/expertise needed in your planned project

e.g.
<https://een.at/internationale-partnersuche/marktplatz>

2. Eol

Submit Expression of Interest

- you've found one or more interesting profiles
- you contact your EEN local contact point
- they submit Eol for you via database

3. Contact

Contact established by EEN

- Local contact point of profile owner forwards Eol to them.
- Profile owner is interested to getting in contact.
- EEN local contact point establishes contact between the 2 parties

Proposal

Successful cooperation

- Both companies start discussions about project content.
- Local contact points not involved in discussions but are happy to help if needed.
- Joint proposal submission

#EENCanHelp

Thank you

Follow us @EEN_EU



Astrid Flandorfer
Enterprise Europe Network
Austrian Research Promotion Agency (FFG)
astrid.Flandorfer@ffg.at

GOOD LUCK
WITH YOUR
PRPOSAL!!



een.ec.europa.eu



FFG
Promoting Innovation.

